



Calgary Progressive  
Lifestyles Foundation

MAY 2023

# The Insider



May 2023

## Happy Mother's Day!

Welcome to the May edition of the CPLF newsletter. The days are growing longer and the trees are starting to blossom - a welcome sight for Calgarians and surrounding areas! We're also happy to be celebrating mothers around the world on the 14th!

# May Events Calendar

Visit CPLF's [Event page](#) or contact [events@cplf.ca](mailto:events@cplf.ca) for more information.

## Mother's Day: May 14

Client Day Programs Continue (unless pre-approved by Case Manager).

## Victoria Day: May 22

Admin Office closed & No Client Day Programs (unless pre-approved by Case Manager).

## Movie Madness

Tuesday's at 11am at Cineplex Sunridge  
No registration required

## BumbleBee Craftic

Tuesday's at 1pm in the CPLF Social Room / West Wing  
Pre-registration required

## Sing-Along

Wednesday's at 1pm in the CPLF Social Room / West Wing  
Pre-registration required

SUN	MON	TUE	WED	THU	FRI	SAT
31	1	Movie Madness Bumble Bee Craftic	2	3	4	5
7	8	Movie Madness Bumble Bee Craftic	9	10	11	12
Mother's Day	14	15	Movie Madness	Sing Along	17	18
19	20	21	Victoria Day	Movie Madness	Sing Along	24
25	26	27	28	29	30	Sing Along
31	1	2	3	4	5	6



**\*Tickets Still Available\***

# Spring Dance

CPLF Staff and supported individuals are invited to join us for an afternoon of dancing and complimentary refreshments and pizza.

**Friday, April 28 at 10:00 am - 3:00 pm**

6021 Madigan Dr NE | Marlborough Park

**Tap to Register for FREE!**



# CPLF Sing-Along

**May 17 - July 19 | Wednesday's at 1pm - 2pm**

CPLF is inviting supported individuals of all abilities to express themselves through singing in a fun and welcoming atmosphere! Pre-register and pay through the EventBrite link below or email [events@cplf.ca](mailto:events@cplf.ca) and pay at the CPLF finance office.

**10 Sessions for \$80**  
**11 Participants maximum**

[Click to Register](#)

Social Room / West Wing at CPLF | Suite 126, 1935 32 Ave NE

# Special Day Awareness



## Victoria Day

The May Long Weekend is a Canadian holiday celebrated on the last Monday preceding May 25th. It's a day to honour Queen Victoria's birthday, who was the first monarch of both Canada and the United Kingdom.

## National Mobility Awareness Month (NMAM)

NMAM focuses on raising awareness about mobility challenges faced by individuals with disabilities. Its goal is to promote accessible transportation options and solutions.



## Community Disability Service Workers Appreciation Week

Did you know that May 22 - 28 is a time for us to appreciate our essential Community Disability Service Workers?

### JOKE OF THE MONTH

**What do you say  
to a tree in May?**

**What a re-leaf!**



# Election

## Alberta Political Party Platforms

As you may know, the Alberta Provincial election of 2023 will be held on May 29. Advance voting takes place the week before Election Day, from Tuesday through Saturday, between 9:00 am and 8:00 pm. To learn more about the four ways to vote, visit the link below.

[How to Vote](#)

To learn more about each of the Alberta political parties platforms, click the links below.

[NDP Platform](#)

[Alberta Party Platform](#)

[Green Party Platform](#)

[UCP Platform](#)

[Liberal Party Platform](#)

CPLF allows staff to vote during work hours if the Case Manager agrees.

# CPLF Election Priorities

CPLF in alignment with our Service Provider Council share a commitment to these priorities which are essential for a vibrant, effective, and resilient network of community-based services for Albertans with developmental disabilities:

## Fair Compensation

A fairly paid, skilled, and sustainable workforce



We ask for a commitment to **fair, planned, and ongoing wage top-ups** for community disability service (CDS) workers, to reflect inflation and wage disparity with competing sectors.

We ask for a commitment to a **comprehensive and cohesive approach to address workforce challenges** by supporting the implementation of the 18 recommendations in ACDS' Project Blueprint CDS: A Comprehensive Strategy for Workforce Strategy for Community Disability Services.

"[The sector needs] wages and benefits that mean an employee can commit to one job and know they will have some security without having to work multiple jobs just to make ends meet."



## Increased System Capacity

Increase the capacity and effectiveness of community disability organizations to help reduce the PDD waitlist

"Operational plans are detailed, program monitoring of goals, activities and timeline in place and reviewed regularly, [however, we] DO NOT have the adequate budget or staff to implement [them] successfully."

We ask for a commitment to **fund the full and true costs of service delivery**, including proper funding for administrative and indirect costs.

We ask for a commitment to **increase the capacity of service providers to help reduce the long waitlist** of people waiting to receive PDD-funded supports.

## Comprehensive and Timely Data

Empower service providers to be an effective partner in forecasting and planning future service needs



We ask for a commitment to **timely, accurate, and complete data about current and potential program beneficiaries** so service providers can develop their capacity effectively to changing program demands.

We ask for a commitment to **collaborate with service providers to develop a forecasting model** to support effective policy and program development.



## A Personal CPLF Message of Appreciation

Did you know that May 22nd to the 28th is Community Disability Service Workers Appreciation Week in the province of Alberta?

Although CPLF is appreciative of all our staff every day, we especially want to applaud the essential work our Disability Service Workers conduct for the benefit of supported individuals and their families.

Our community needs you and you are much appreciated even though at times it may not feel like it.

Sincerely,

CPLF Management



# Community Rehabilitation Workers (CRW) Job Responsibilities

As employees of CPLF, Support Workers need to understand that it is not their responsibility to maintain (shovelling snow, vacuuming, laundry, household dishes, dusting, etc) a client's home unless pre-approved by a Case Manager. Having said this, it is always the responsibility of CPLF employees to clean up after themselves within a client's home and/or at CPLF offices.





# Calgary Events

Looking for something to do in May? Here are a couple events we found around Calgary. Enjoy the warmer weather friends!

## Found Spring Market

May 14

Come join Found from 10am to 4pm in the Hemingway Room at The Commons in Calgary's Inglewood. Treat yourself and bring your family & friends along for a veritable feast of locally-made snacks and snack-themed items.

## Calgary Book Drive and Sale

May 3 - 14 Weekends

Make a real difference for women and children experiencing the violence and trauma, as they turn the page and start a new chapter of their story. Drop off your gently used books to help support the cause.

[More Events](#)

**Inspiration &  
Designer Style**

[Get a Quote](#)



 **CANYON**  
PLUMBING & HEATING LTD  
*Here for you.*



# Share Your Thoughts!



Hey friends, feel free to give CPLF a rating and review on Google. We'd love to hear what you have to say and it's fast to do! Click the link below to share your thoughts.

[Write Your Google Review](#)



**CANADIAN  
GREEN THUMB**

**Grow longer. Grow more.**

[Learn more](#)



[Apply Today](#)

# CPLF Now Hiring

## Casual Complex Needs Support Workers

CPLF is currently seeking Casual Complex Needs Support Workers to work with Complex Needs clients. Complex Needs clients will have more than 1 disability.

### Requirements

- Resume
- Work Application link (if not currently employed at CPLF)
- 3 References – 2 Work related and 1 Character
- Police Clearance with Vulnerable Persons Check and/or Child Welfare Check (within the last two years)

### Benefits

- Staff will have the support of our Complex Needs Coordinator, Case Manager, and Support Staff.
- Employees will receive in-house training.
- Casual staff may be transitioned into permanent positions.

**Job Type:** Casual

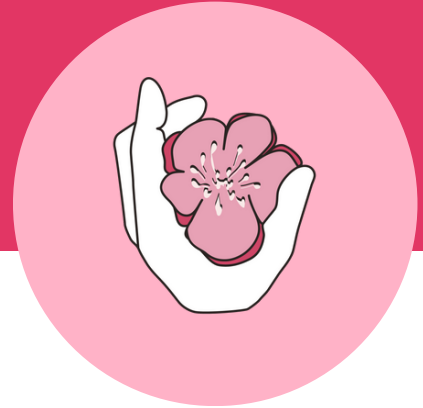
**Salary:** Ranges from \$19.58 - \$24.20 / hour or as per client's unique budget.

Teaching people how to grow so they can grow and teach others.

[Learn more](#)



# Thank You for Supporting CPLF!



## Our Valued Sponsors

CPLF Sponsors are very important to us as they help champion our mission and values and bring our vision to life. Together we advocate on behalf of the disAbility community.

If you and/or your organization are interested in Organic and Cause Marketing, we would be happy to hear from you. Elevate your business with a compelling feature and ad on our sponsor page, showcasing your brand to 1,800+ loyal newsletter subscribers each month. Please email [info@cplf.ca](mailto:info@cplf.ca).

**Become a CPLF Sponsor**



## Follow CPLF on social media



#140, 1935 32 Ave NE,  
Calgary, AB

(403)-276-1016  
[info@cplf.ca](mailto:info@cplf.ca)

## Our Classified Ads



**Sam Withey**  
Financial Advisor

Unit 5, 57 West Aarsby Rd  
Cochrane, AB | T4C 1M1  
403-932-1275

[edwardjones.ca](http://edwardjones.ca)  
Member - Canadian Investor Protection Fund

**Edward Jones**  
MAKING SENSE OF INVESTING

Edward Jones received the highest numerical score among 15 brokerage firms in the J.D. Power 2013-2016 Canadian Full Service Investor Studies. 2016 study based on 5,139 total responses, measuring the opinions of investors who use full-service investment firms, surveyed May-June 2016. Your experiences may vary. Visit [jdpower.com](http://jdpower.com)

IRT-10377A-C