



Calgary Progressive
Lifestyles Foundation

APRIL 2023

The Insider



April 2023

Happy Earth Day!

Welcome to the latest edition of the CPLF newsletter! As we bid farewell to the last of winter, we look forward to the blossoming of spring and Earth Day on the 22nd. With Easter just a few weeks away, it's a great time to get out and enjoy the sunny days and spend time with family and friends.

April Calendar

Good Friday: Friday, April 7

Admin Office closed & No Client Day Programs (unless pre-approved by Case Manager).

Easter Monday: Monday, April 10

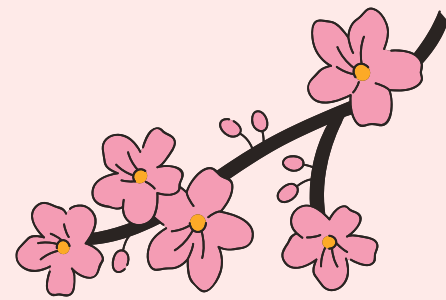
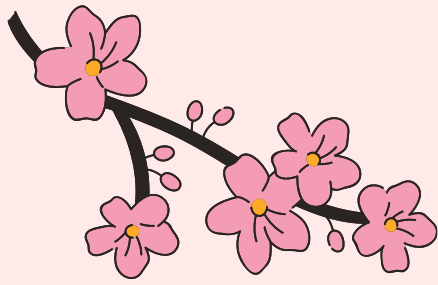
Admin Office closed & Client Day Programs continue as normal.

Spring Dance: Friday, April 28

Admin Office closed & Client Day Programs continue as normal.

[View Website Calendar](#)

Sunday	Monday	Tuesday	Wednesday	Thursday	Friday	Saturday
25	26	27	28	29	30	1
2	3	Bumble Bee Craftic 4	5	6	Good Friday 7	8
Easter 9	Easter Monday 10	Movie Madness Bumble Bee Craftic 11	12	13	14	15
16	17	Movie Madness Bumble Bee Craftic 18	19	20	21	Earth Day 22
23	24	Movie Madness Bumble Bee Craftic 25	26	27	Spring Dance 28	29
30	1					



CPLF Crafts & Painting Class

Bumble Bee Craftic

Ends May 9th

Every Tuesday 1:00pm - 3:00pm

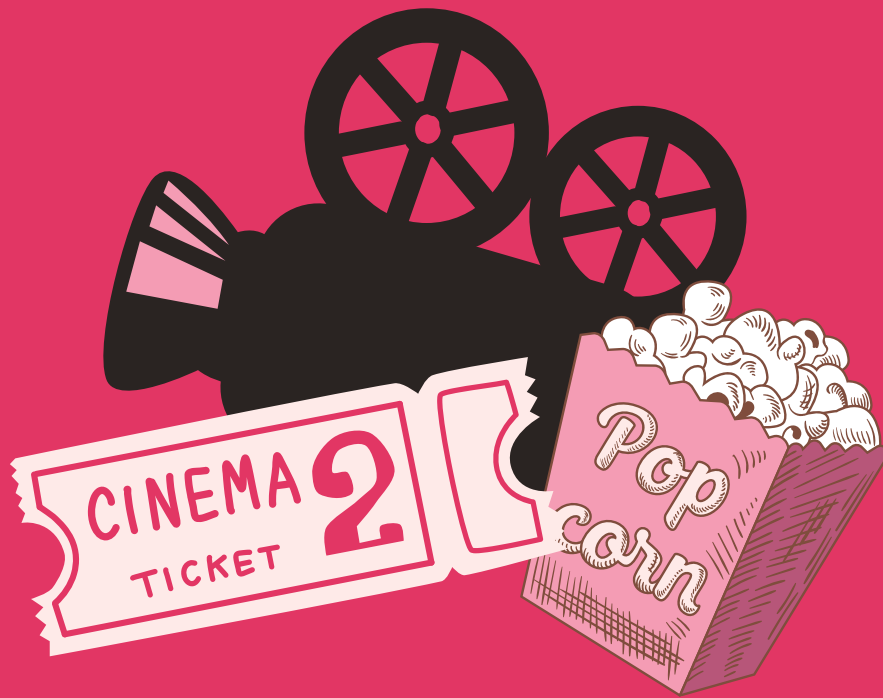
**140, 1935 32 Ave NE, Calgary
(West Wing Hall)**

Spots are only \$80 for 8 sessions and they fill up fast! Be one of the 15 lucky people to register by March 17 by emailing:

events@cplf.ca

Join Us For The CPLF

MOVIE MADNESS!



April 11 - May 23, 2023 | Tuesday's @11am

CPLF clients and guardians are welcome to join us at the movies during April and May! Meet us at the arcade area at the Cineplex Odeon Sunridge and enjoy the latest movies with new friends.

[Click to Register for FREE!](#)

Cineplex Odeon Sunridge | #400, 2555 32 Street N.E.



Welcome to the CPLF

Spring Dance

CPLF Staff and supported individuals are invited to join us for an afternoon of dancing and complimentary refreshments and pizza.

Friday, April 28 at 10:00 am - 3:00 pm

6021 Madigan Dr NE | Marlborough Park

Tap to Register for FREE!



Sing-Along



WITH TIM

CPLF is inviting supported individuals of all abilities to express themselves through singing in a fun and welcoming atmosphere. We're looking forward to coming together and making new friends!

Coming Soon

Events & Updates

The Insider | April 2023



Earth Day

Turn off your lights for one hour and demonstrate your support to address climate change and biodiversity loss. Earth Day was first observed in 1970 and has since grown into a global movement with millions of people participating in activities like tree planting, clean-ups, and advocacy for sustainable living!

Autism Awareness Month

This month is an opportunity to celebrate the unique perspectives and strengths of individuals with autism. By increasing awareness and our understanding of autism, we can create a more inclusive and accepting society that celebrates neurodiversity. Let us embrace and support individuals with autism, and celebrate the important contributions they make to our world!



JOKE OF THE MONTH

Why did the Easter egg hide?

Because it was a little chicken!



Calgary Transit Access News

Service Dogs

Service dogs are working animals and can be identified by their vest or harness. If you see a service dog while taking a trip with Calgary Transit Access, please avoid distracting them by touching them, calling to them, offering food, or otherwise trying to get their attention. Thank you for your cooperation.

Cancellation Policy

Starting in April, the Calgary Transit Access cancellation policy will be reinstated to improve their services:

- Citizens must cancel trips at least 2 hours before your scheduled pick-up (late cancellations may result in a letter or suspension).
- If you cancel a trip late 3+ times in a 30-day period, or 40% of trips in a subscription booking, you will receive a letter to remind you of their cancellation policy.
- 6+ late cancellations in a 60-day period may result in a suspension of service.

[Calgary Transit Access](#)

CPLF Wage Enhancement

Thanks to all our professional dedicated essential work and to those who have taken the additional steps to advocate for our industry through organizations such as Alberta Disabilities Workers Association (ADWA) and the Calgary Rehabilitation Service Provider Council, all service providers supporting people with disabilities have been offered additional money to combat inflationary pressures from the Alberta Government.

CPLF has offered a one-time earnings adjustment based on employee's number of worked hours for the months of January, February, and March which has been offered to all CPLF employees in our March pay period.

In addition, all support staff (employees and contractors) of CPLF will receive a gross wage increase of 10% minus payroll deductions beginning April 1st.

CPLF is appreciative that our valued work is being recognized in the form of a wage enhancement as we continue to advocate for people with disabilities and our most valued support staff.

Best regards,

Neal Sabourin

C.O.O.





Calgary Progressive
Lifestyles Foundation

CPLF Level 2 Accreditation Achieved

As you may or not be aware, our funder Persons with Developmental Disabilities mandates all service providers to achieve their Creating Excellence Together (CET) Level 1 in order to be approved to support people with disabilities. In addition, if a service provider wants to support people with Complex Needs, PDD mandates that service providers achieve the prestigious Level 2 + Complex Needs Designation + Respite accreditation.

With much courage and dedicated work, I am most proud to announce that Calgary Progressive Lifestyles Foundation (CPLF) has now achieved our Level 1 and Level 2 accreditation!

With our Level 2 accreditation, CPLF has enhanced our services as a distinguished service provider of PDD supported individuals including Complex Needs. Complex Needs individuals are those individuals who pose a significant risk, and/or are destructive to themselves, others or property. They require intensive services and have, or have had, a history of one or more of the following diagnoses or life experiences:

- A mental health disorder;
- Termination from services due to challenging behaviours;
- Specialized treatment for psychiatric and/or behavioural issues;
- Multi-system involvement;
- Incarceration(s) or criminal justice involvement; and/or
- Chronic substance abuse/dependency problems.



CPLF would like to thank all who participated in our CET survey in October of last year. Specifically, I would like to thank our CET survey participants including guardians, supported individuals, and our support staff. Without your efforts in the CET survey, CPLF would not have met the criteria for the survey team to conduct interviews. I would also like to thank our CPLF Administrative team that has worked tirelessly in adopting new policies and procedures that promise to have our organization operate effectively for the betterment of our supported individuals and staff. Finally, I need to thank all our staff (employees and contractors) for the excellent working relationships you have with your supported individuals, your effective dedicated work you showcase daily and maintaining your essential training requirements.

With courage and dedication, we are moving forward together!

Proudly,

Neal Sabourin

C.O.O.





Calgary Events

Looking for something to do in April? Here are a couple events we found around Calgary. Enjoy the warmer weather friends!

National Women's Show

April 22 - 23

Looking for the ultimate girl's day out? Come to The National Women's Show, a fantastic day filled with fashion, food, and fun. With hundreds of exhibits offering the best and the largest selection of products and services there is something for every woman!

Acclaimed Art Show

April 21 - 22

Enjoy a stroll through original artwork by twelve of Calgary's professional fine artists. This beautiful show fills the Crescent Heights community centre with hundreds of paintings in a variety of styles, sizes and prices.

[More Events](#)

**Inspiration &
Designer Style**

[Get a Quote](#)



 **CANYON**
PLUMBING & HEATING LTD
Here for you.



CPLF Testimonial



"CPLF is another family to myself and other people with DisAbilities. I like CPLF because I can make friends, go out in the community, get help with employment programs, and finding a job. I feel happy, cheerful, excited, and optimistic. I also feel included in the community, I also have more confidence in myself."

- FELICITY -

[Write a Review for CPLF](#)



**CANADIAN
GREEN THUMB**

Grow longer. Grow more.

[Learn more](#)



[Apply Today](#)

CPLF Now Hiring

Casual Complex Needs Support Workers

CPLF is currently seeking Casual Complex Needs Support Workers to work with Complex Needs clients. Complex Needs clients will have more than 1 disability.

Requirements

- Resume
- Work Application link (if not currently employed at CPLF)
- 3 References – 2 Work related and 1 Character
- Police Clearance with Vulnerable Persons Check and/or Child Welfare Check (within the last two years)

Benefits

- Staff will have the support of our Complex Needs Coordinator, Case Manager, and Support Staff.
- Employees will receive in-house training.
- Casual staff may be transitioned into permanent positions.

Job Type: Casual

Salary: Ranges from \$19.58 - \$24.20 / hour or as per client’s unique budget.

Teaching people how to grow so they can grow and teach others.

[Learn more](#)



Thank You for Supporting CPLF!



Our Valued Sponsors

CPLF Sponsors are very important to us as they help champion our mission and values and bring our vision to life. Together we advocate on behalf of the disAbility community.

If you and/or your organization are interested in Organic and Cause Marketing, we would be happy to hear from you. Elevate your business with a compelling feature and ad on our sponsor page, showcasing your brand to 1,800+ loyal newsletter subscribers each month. Please email info@cplf.ca.

Become a CPLF Sponsor



Follow CPLF on social media



#140, 1935 32 Ave NE,
Calgary, AB

(403)-276-1016
info@cplf.ca

Our Classified Ads



Sam Withey
Financial Advisor

Unit 5, 57 West Aarsby Rd
Cochrane, AB | T4C 1M1
403-932-1275
edwardjones.ca
Member - Canadian Investor Protection Fund

Edward Jones
MAKING SENSE OF INVESTING

Edward Jones received the highest numerical score among 15 brokerage firms in the J.D. Power 2013-2016 Canadian Full Service Investor Studies. 2016 study based on 5,159 total responses, measuring the experience of investors who use full-service investment firms, surveyed May-June 2016. Your experiences may vary. Visit jdpower.com. IRT-10377A-C